



Society for Growing Australian Plants (Queensland Region) Inc.

Cairns Branch
PO Box 199
Earlville Qld 4870

Newsletter No. 97
March 2010

Society Office Bearers

Chairperson	Tony Roberts	40 551 292
Vice Chairperson	Mary Gandini	40 542 190
Secretary	Ing Toh	40 310 551
Treasurer	Robert Jago	40 552 266

Membership Subscriptions- Qld Region- Renewal \$35.00, New Members \$40, each additional member of household \$2.00 **Student** - \$30.00, **Cairns Branch Fees** -\$10.00 Full Year

To access our Library for the loan of publications, please contact David Warmington
Newsletter Editor: Tony Roberts travelling_botanist@yahoo.com.au

Dates to remember

Cairns Branch Meetings and Excursions – third Saturday of each month.

NEXT MEETING AGM followed by an ordinary meeting and a tour of Brinsmead Park
Saturday 20th March. Meet at 5 McCarthy Close Brinsmead (Tony and Trudi's place) at 1200.
See below for details.

Tablelands Branch Excursion– Sunday following the meeting on the fourth Wednesday of the month. Any queries please contact Chris Jaminon 4095 2882 or hjaminon@bigpond.com

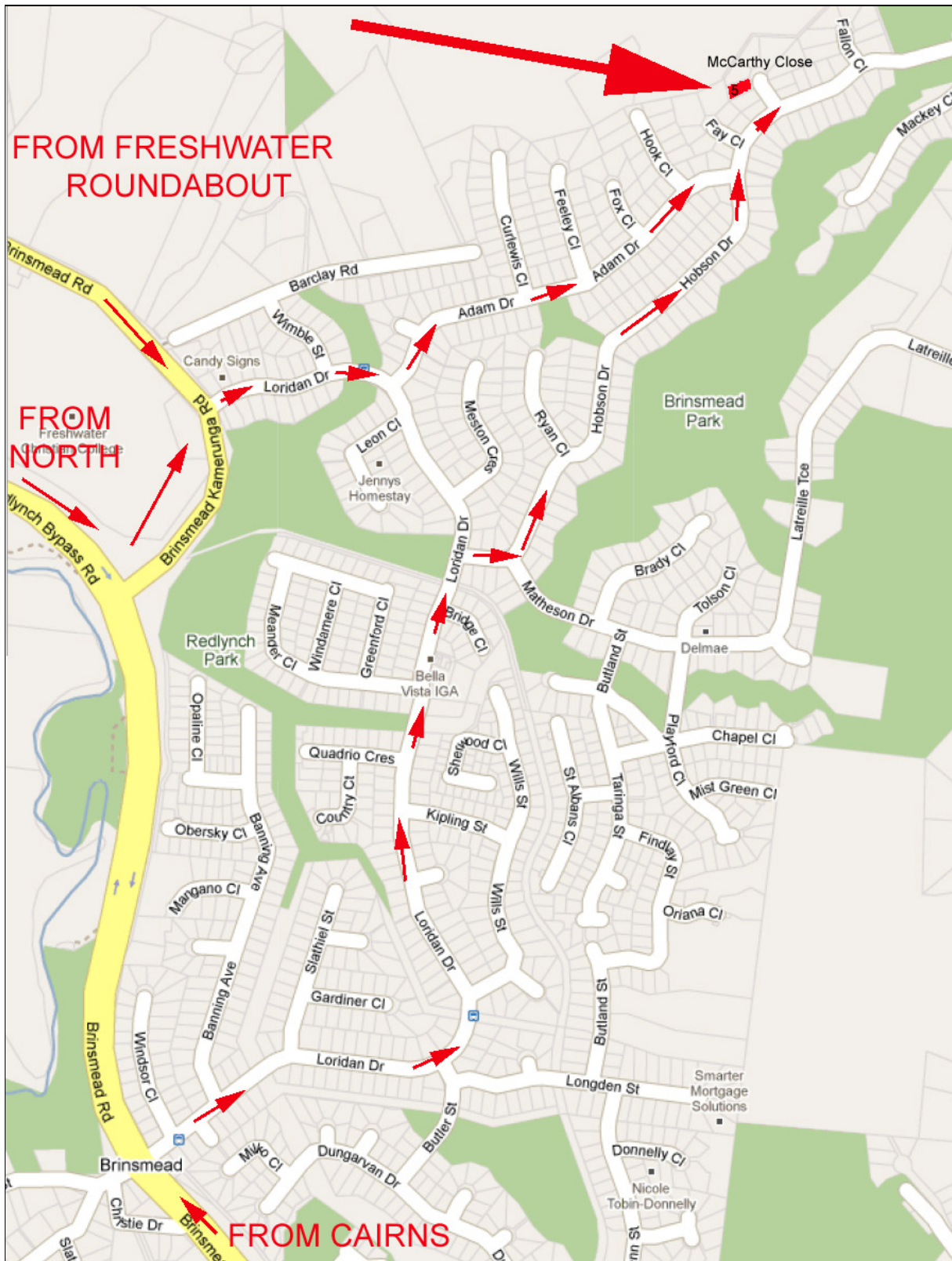
Townsville Branch

Please contact John Elliot: jw-elliott@aapt.net.au for more information

March Meeting & AGM

The AGM and March ordinary meeting will be held at Trudi and Tony's place 5 McCarthy Close, Brinsmead. A map is attached below. If you have problems interpreting the map or get geographically embarrassed on the day, please don't hesitate to call. Don't forget that all of the committee positions will become vacant. Prior to the AGM, please consider what you would like to contribute to our society over the next twelve months.

The more you sow the more you reap



February Excursion – Report

We held the February ordinary meeting under the protection of a picnic shelter at Deadman's Gully Environmental Reserve, Clifton Beach. This was fortunate as the rain came down just as the meeting was wrapping up.

Only a few showers hindered our exploration of the Clifton Beach – Palm Cove walk. The paved pathway

Guioa acutifolia
Jagera pseudorhus var. *pseudorhus*
Scolopia braunii
Eucalyptus platyphylla
Parsonia velutina
Rhamnella vitiensis
Chionanthus ramiflora
Ichnocarpus frutescens
Ficus opposita
Aidia racemosa
Litsea glutinosa
Albizia procera
Acacia polystachya
Pseuderanthemum variabile
Eranthemum pulchellum
Polyalthia nitidissima
Claoxylon hillii
Melia azedarach
Cryptocarya exfoliata
Semecarpus australiensis
Aleurites rockinghamensis
Macaranga tanarius
Melaleuca leucadendra
Cordia dichotoma
Faradaya splendida
Toechima daemelianum
Pouteria / Planchonella ??
Carallia brachiata
Ficus racemosa var. *racemosa*
Ficus virens var. *virens*
Myristica globosa subsp. *muelleri*
Millettia pinnata
Pisonia aculeata
Polyscias elegans
Nauclea orientalis
Terminalia sericocarpa
Terminalia catappa
Terminalia arenicola
Terminalia muelleri
Pipturus argenteus
Uvaria concava

meandered through a well manicured recreation park, complete with children's play equipment. It then passed a proposed development site, extension of the Argentia Development, and then followed Sweet Creek. We took several side paths that crossed the creek / swamp to the beach.

A plant list was constructed by David and Bob. The species encountered are below.

Glossy Tamarind
Foambark
Flintwood
Poplar Gum
Velvet Silkpod

Native Olive

Sandpaper Fig
Archer Cherry
Bollywood
Forest Siris
Ellis Beach Wattle
Pastel Flower
Blue Sage (exotic)
Canary Beech

White Cedar

Tar Tree
Candlenut
Blush Macaranga
Tea Tree

October Glory

Corky Bark
Cluster Fig
White Fig
Nutmeg
Pongamia

Celerywood
Leichhardt Tree
Damson
Sea Almond
Beach Almond
Little Sea Almond
Native Mulberry
Calabao

<i>Cayratia thoursbourni</i>	Native jasmin
<i>Jasminum elongatum</i>	Merremia (exotic)
<i>Merremia quinquefolia</i>	Weeping Cleistanthus
<i>Cleistanthus apodus</i>	Pink Phyllanthus
<i>Phyllanthus cuscutiflorus</i>	Harvey's Buttonwood
<i>Glochidion harveyanum</i> var. <i>harveyanum</i>	
<i>Abroma fastuosa</i>	
<i>Melicope elleryana</i>	Evodia
<i>Ficus congesta</i> var. <i>congesta</i>	Red Leaf Fig
<i>Calophyllum sil</i>	Blush Touriga
<i>Leea indica</i>	Bandicoot berry
<i>Solanum torvum</i>	Devil's Fig (exotic)
<i>Mallotus philippensis</i>	Red Kamala
<i>Hibiscus tiliaceus</i>	Cottonwood
<i>Alphitonia petriei</i>	Pink Ash
<i>Pandanus slomslaubachii</i>	Swamp Pandan
<i>Flagellaria indica</i>	Supplejack
<i>Trichospermum pleiostigma</i>	Whitfield Ash
<i>Excoecaria agallocha</i>	Milky Mangrove
<i>Passiflora foetida</i>	
<i>Cynometra iripa</i>	Wrinkle Pod Mangrove
<i>Mischocarpus exangulatus</i>	Rex Tokoonya
<i>Pittosporum ferrugineum</i> subsp. <i>linifolium</i>	Rusty Pittosporum
<i>Allophylus cobbe</i>	
<i>Tabernaemontana orientalis</i>	Eastern Gondola Bush
<i>Alstonia muelleriana</i>	Hard Milkwood
<i>Heritiera littoralis</i>	Looking Glass Mangrove
<i>Diospyros compacta</i>	Australian Ebony
<i>Mimusops elengi</i>	Red Coondoo
<i>Rhizophora stylosa</i>	Stilt Mangrove
<i>Bruguiera gymnorhiza</i>	Orange Mangrove
<i>Atractocarpus fitzalanii</i> subsp <i>fitzalanii</i>	Brown Gardenia
<i>Aegiceris corniculatum</i>	River Mangrove
<i>Scaevola taccada</i>	Cardwell Cabbage
<i>Vitex rotundifolia</i>	Creeping Vitex
<i>Avicennia marina</i> subsp. <i>eucalyptifolia</i>	Grey Mangrove
<i>Ipomoea pes-caprae</i>	Goat's Foot Morning Glory
<i>Cyperus pedunculatus</i>	Pineapple Sedge
<i>Cyperus javanicus</i>	
<i>Zornia filiformis</i>	
<i>Dillenia alata</i>	Red Beech
<i>Alyxia spicata</i>	Chain Fruit
<i>Breynia cernua</i>	Fart bush
<i>Memecylon pauciflorum</i>	
<i>Acmena hemilampra</i> subsp <i>hemilampra</i>	Blush Satinash
<i>Syzygium angophoroides</i>	Yarrabah Satianash
<i>Exocarpos latifolius</i>	Native Cherry
<i>Planchonella obovata</i>	Yellow Boxwood
<i>Maytenus fasciculiflora</i>	
<i>Cycas media</i> subsp. <i>banksii</i>	Cycad
<i>Dendrobium discolor</i>	Golden Orchid

Major Project

As discussed at the February Meeting, the Banks and Solander project is progressing nicely. I have been in contact with Steve Cafferty of the Natural History Museum, London who was most helpful. Below is a list of plants collected by Banks and Solander at Mission Bay (near Cairns) representing data from Don Lawie, the Sydney Herbarium, Natural History Museum, London and the Banks and Solander Floralegium.

Alyxia spicata
Hoya australis
Sarcostemma australe
Hibiscus normanii
Hibiscus meraukensis
Helichrysum rupicola
Myrtella obtuse
Gmelina macrophylla
Plectranthus apreptus
Piper mestonii
Borreria (Spermacoce nodosa?)
Utricularia minutissima
Utricularia caerulea
Utricularia uliginosa
Dodonaea polyandra
Planchonia careya
Wedelia biflora
Desmodium umbellatum
Vigna vexillate / Vigna vecillata
Mitrasacme pygmaea
Evolvulus alsinoides var. decumbens
Solanum viride
Drosera indica
Premna integrifolia
Gmelina macrophylla
Clerodendrum floribundum
Pimelea cornucopiae
Ficus opposite
Dendrobium discolour
Litsea leefeana

It has been suggested that we visit the site that Cook, Banks and Solander visited, as a field trip (possibly by boat), on or around the date of the original visit (10 June), to see how many of the originally collected plant species remain. Depending on the tenure of the land and the granting of permission we may be able to collect propagating material for

planting in the proposed Banks and Solander garden.

For those having a maritime historical interest, I have produced a chart estimating the Endeavour's anchorage in Mission Bay using both Cook's Journal and several other historical documents.

Point "A" illustrates the anchorage derived from Cook's compass sightings (triangulation the green lines). The dark red circle encompasses the area of errors. In his log Cook states that he anchored 3 miles west of Cape Grafton which would place it a distance west of this point. He also took a sighting of the anchorage using his sextant. Point "B" illustrates this spot and the large red circle around the point shows the extent of error that could be expected with the precision quoted by Cook. Note that point "A" falls within this area indicating that a reasonable amount of confidence can be put on point "A" being near the correct position. A RAN navigator is currently further assessing Cook's readings to attempt to more accurately plot the Anchorage.

IMPORTANT

A special meeting, to discuss the Banks and Solander project, will be held prior to the AGM. Those interested in attending please be at Trudi and Tony's place by 11am Saturday 20 March.

WWW site of interest & Book Review

This month I've combined the WWW site of interest & Book Review to reflect the abovementioned project. The web site hosts "The Journals of James Cook's First Pacific Voyage, 1768-1771", including the journals of James Cook, Joseph Banks, Sydney Parkinson and John Hawkesworth. For those members interested in the local collections of Banks and Solander, this site provides a very interesting read.

http://southseas.nla.gov.au/index_voyaging.html

