

# Society for Growing Australian Plants

## Cairns Branch

◆  
June 2026



### May Highlights

#### **Babinda Boulders Joint Excursion with the Tablelands branch.**

It happens frequently at SGAP outings that we begin our observations of the native plants from the car park, before starting our walks. In this instance the large car park at The Boulders **was** the destination!

Managed by Cairns Regional Council (CRC), the plants in and around the recreational area are a combination of rainforest regrowth and plantings. Using the 2016 CRC Boulders Tree Survey, consisting of a map and species list, we set out to identify which trees remain present today and what else may be in the area.

A large *Acronychia* was observed and as we discussed the species, a Tablelands member noted that ripe fruit had already dropped in their neighbourhood. This encouraged renewed inspection, and we finally spotted several small marble sized green fruit. This process of looking, then looking deeper is truly rewarding. Nearby, a moss covered leaf looks virtually unrecognisable on a vine that winds its way up a large trunk. A newer leaf on the vine,



***Carronia pedicellata***

### Next Excursion

Stannary Hills and Irvinebank  
(Joint Cairns/Tablelands excursion)

Sunday 21 June.

Meet 10 a.m. at Darby Camp Children's Park, William Street, Herberton.

rsvp:

[secretary@sgapcairns.org.au](mailto:secretary@sgapcairns.org.au)

Don't forget to pay your branch and regional fees so you can participate in excursions.

### Upcoming Excursions

July: Cooktown

August: Harvey Creek

September: Daintree

October: Cattana Wetlands

November: Mason St

December: Christmas party, Edge Hill Bowls Club

### SGAP Library

Explore items available for loan [here](#).

President            Tony Roberts  
Vice President     Sandy Watts  
Treasurer          Val Carnie  
Secretary          Tony Roberts

Publicity  
Webmaster  
Newsletter  
Librarian

Rachel Platte  
Tony Roberts  
Sandy Watts  
Coralie Uebergang



Cairns and Tablelands group. (Minus Helen who braved a swim!)

shows it is a *Carronia pedicellata*, noted on our list as endemic to NEQ. The Lucid Central Rainforest Key includes a useful and beautiful photo by Barry Jago, who also joined us for the walk.

[https://apps.lucidcentral.org/rainforest/txt/entities/carronia\\_pedicellata.htm](https://apps.lucidcentral.org/rainforest/txt/entities/carronia_pedicellata.htm)



***Dinosperma stipitatum*. This specimen was flowering as a small shrub with pale pink new flush.**

An old *Syzygium cormiflorum* stands in the car park roundabout, witness to BBQs, musicians and forgotten towels. Conveniently flowering at eye height, and all up the trunk, the pale pom pom blooms are not the most captivating part of this tree. It is the new growth that is enchanting: vibrant violet almost translucent in the

bright sunshine. More often seen reddish in hue under the shade of the canopy, this colour variation must have something to do with its location.



***Geophila repens*, lovely delicate ground cover.**

Other species of interest included:

- Syzygium hedraiophyllum*
- Barringtonia calyptata* \*
- Ristantia pachysperma* \*
- Xanthophyllum octandrum* \*
- Carnarvonia araliifolia* \*
- Elaeocarpus Grandis*

Those marked with an asterisk were among many species that were heavily logged after the war due to their hard wood, which was used in

structural construction. Unfortunately there are no images of these as they have become towering trunks!

Another stunning display greeted those who continued the walk after lunch. Long flower stems of *Hollandaea sayeriana* (Sayer's Silky Oak) hung down among the competing vines.

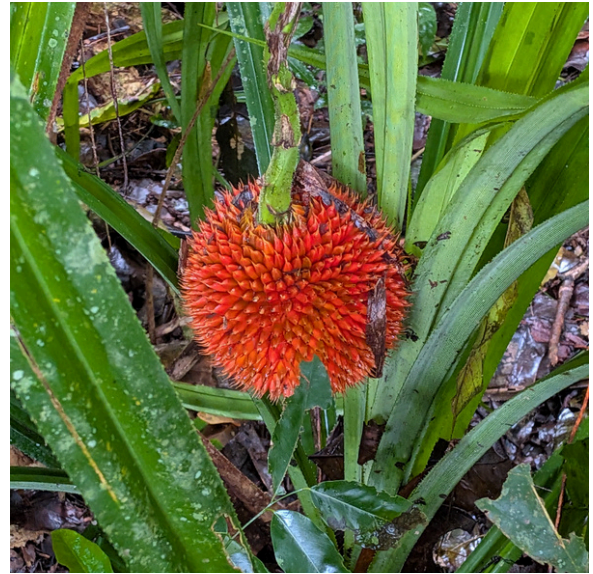


***Hollandaea sayeriana***

The tree itself was hard to see but the black conflorescences and multitude of pinky-red flowers contrasted against the various greens.

So for those who can take the time, a walk like this, exceedingly accessible and full of variety, has much to recommend it.

Words by Helen Lawie, Patsy Penny and Sandy Watts.



***Benstonea monticola***

## Cooktown 2026

July Joint Excursion - Tablelands and Cairns Branch Cooktown Botanic Gardens Working Bee.

Midyear brings our annual excursion to Cooktown. Over many years, SGAP Cairns and Tablelands groups have contributed plants, labour and expertise to the development of the gardens. Our working bees have established two beds – one dedicated to the species collected by Banks and Solander in 1770, the other showcasing north Queensland species. Both are now well established, but like any garden require ongoing maintenance and updating.

This year James Cook University Townsville has donated a number of interesting plants for incorporation into the Gardens, collected from Cape York last year and propagated on site in Townsville. Some may be suited to planting in the established beds, others may require more sun.

## Cooktown cont...

Gardens Curator, Nikko Menzel has organised a camping space on the eastern side of the Cricket Oval, where our group has camped in previous years (see map below). We have access to the toilets nearby, and showers at the gardens nursery.

### Details:

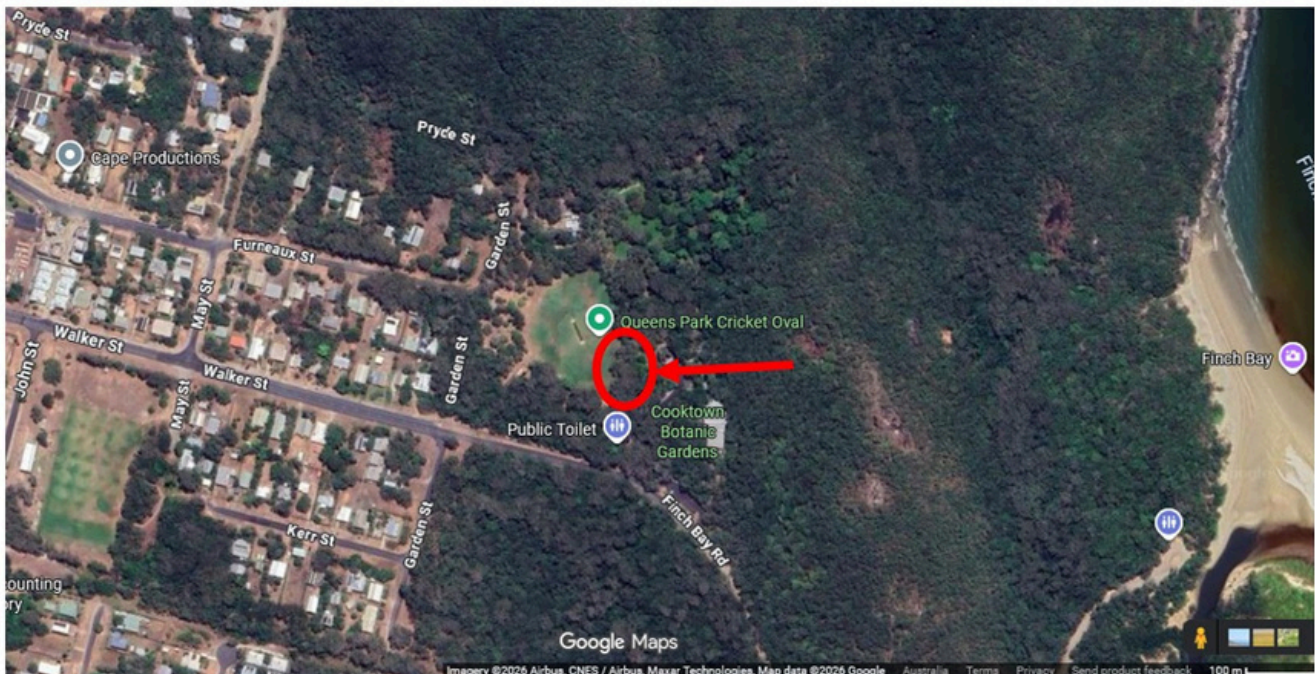
Friday 17 July – arrive Cooktown, set up camp (or your chosen motel). Settle in and make yourself comfortable.

Saturday 18 July – 9 a.m. to 4 p.m. Working bee in and around the gardens. Work plan to be discussed.

Sunday 19 July – Excursion. Destination to be advised by Nikko.

Please confirm your attendance by emailing [secretary@sgapcairns.org.au](mailto:secretary@sgapcairns.org.au) before 10 July.

If you have any questions, contact Stuart Worboys by email on [worboys1968@yahoo.com.au](mailto:worboys1968@yahoo.com.au)



# Hornstedtia scottiana

*Hornstedtia* - Swedish botanist, Claes Fredrik Hornstedt  
 Family: Zingiberaceae



## About

Scott's ginger, sometimes known as native cardamom, is a large native ginger. Its characteristic leafy stems emerge directly from underground rhizomes, creating lush clumps in suitable habitats. The plant produces distinctive red flowers at its base and thrives in moist, shaded environments.

The fruit is eaten by cassowaries and the plant serves as a food source for the larval stages of the Banded Demon butterfly



## Occurrence

Occurs in northern Queensland, PNG and other pacific islands, from near sea level to 200m.

## Propagation

Propagate by seed (germination 49 days) or by dividing established clumps. Seeds require no special pre-treatment before sowing.



## In short

Herb  
 medium, shrubby  
 plant, 2-4 m

Flowers: basal, red

Fruit: 20 x 20mm



Notes: Suitable for medium to large gardens.

Further reading:  
[ATRP](#)  
[ALA](#)